



**Section B:**

Proof games in which a piece (not a pawn) undertakes a significant journey without capturing, and then is captured. No fairy pieces or fairy conditions. No limit on the number of entries per composer.

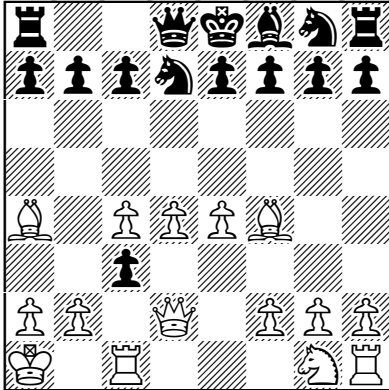
Entries to Dan Meinking: [dmeinking@roadrunner.com](mailto:dmeinking@roadrunner.com). Judge: Gianni Donati. Deadline: February 15, 2010.

EXAMPLE:

Gianni Donati

Original

r2qkbsr/pppspppp/8/8/B1PPP2/2p5/PP1Q1PPP/K1R3SR



PG in 11.5 (15+15) C+

1.e4 d5 2.Bb5+ Bd7 3.c4 d4 4.Sc3 dxc3 5.d4 Bc6 6.Bf4 Sd7 7.Qd2 Bd5 8.OOO Be6 9.Kb1 Bg4 10.Rc1 Bd1 11.Ka1Ba4 12.Bxa4

**12/06/2009:** A promoted piece may also be thematic, even if captures occurred upon or before promotion.

Tourney announcement and PDF documents available at: [www.alphasleuth.com/pages/article-GCQCT.php](http://www.alphasleuth.com/pages/article-GCQCT.php)